

The Mariners' Park

History

The Mariners' Museum and Park was founded in 1930 by Archer Milton Huntington and Homer L. Ferguson. The first two years of development were devoted to creating and improving a natural park. Today, The Mariners' Park is one of the largest parks in the country that is privately owned and maintained, but free and open to the public. The Park is 550 acres of naturally wooded property that offers visitors a quiet and serene place to walk, run, or picnic.

The Noland Trail

Following the shoreline of Mariners' Lake is the five-mile Noland Trail. Dedicated as a gift from the Noland Family in 1991, the Trail offers picnic areas, benches, 14 bridges, and half-mile markers.

Lions Bridge

Lions Bridge is a stunning Park landmark, noted for its four lion statues created by the Museum founder's wife, sculptor Anna Hyatt Huntington. It has been voted as a local favorite for picnicking with gorgeous views of the James River.

Mariners' Lake

The 167-acre Mariners' Lake adds to the serene landscape in the Park and is an ideal location to experience wildlife.

Event Rentals

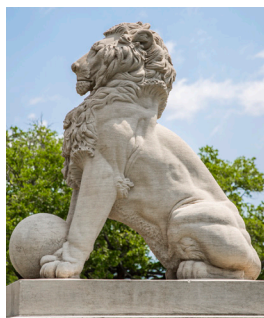
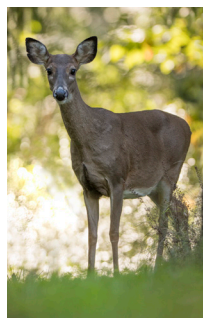
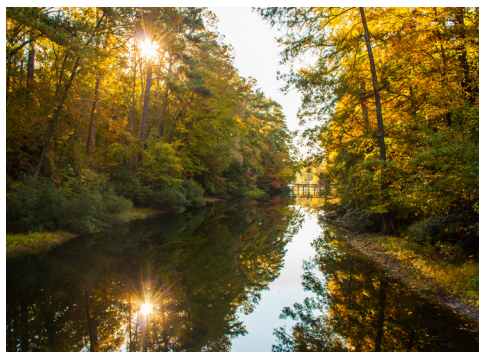
Select Park spaces are perfect locations for your intimate ceremony or your race event. Visit website or call (757) 591-5124.

Want to Volunteer?

Give your time and talent to the Park and Noland Trail by volunteering with the Park Department. Visit website or call (757) 591-7712.

MarinersMuseum.org

100 Museum Drive • Newport News, VA 23606
Located off Exit 258A on I-64. • (757) 596-2222



Your Park, Our Duty.

Support Your Park & Trail

This Park belongs to you. Help us ensure this remarkable urban oasis continues to be a free community resource for many generations to come.

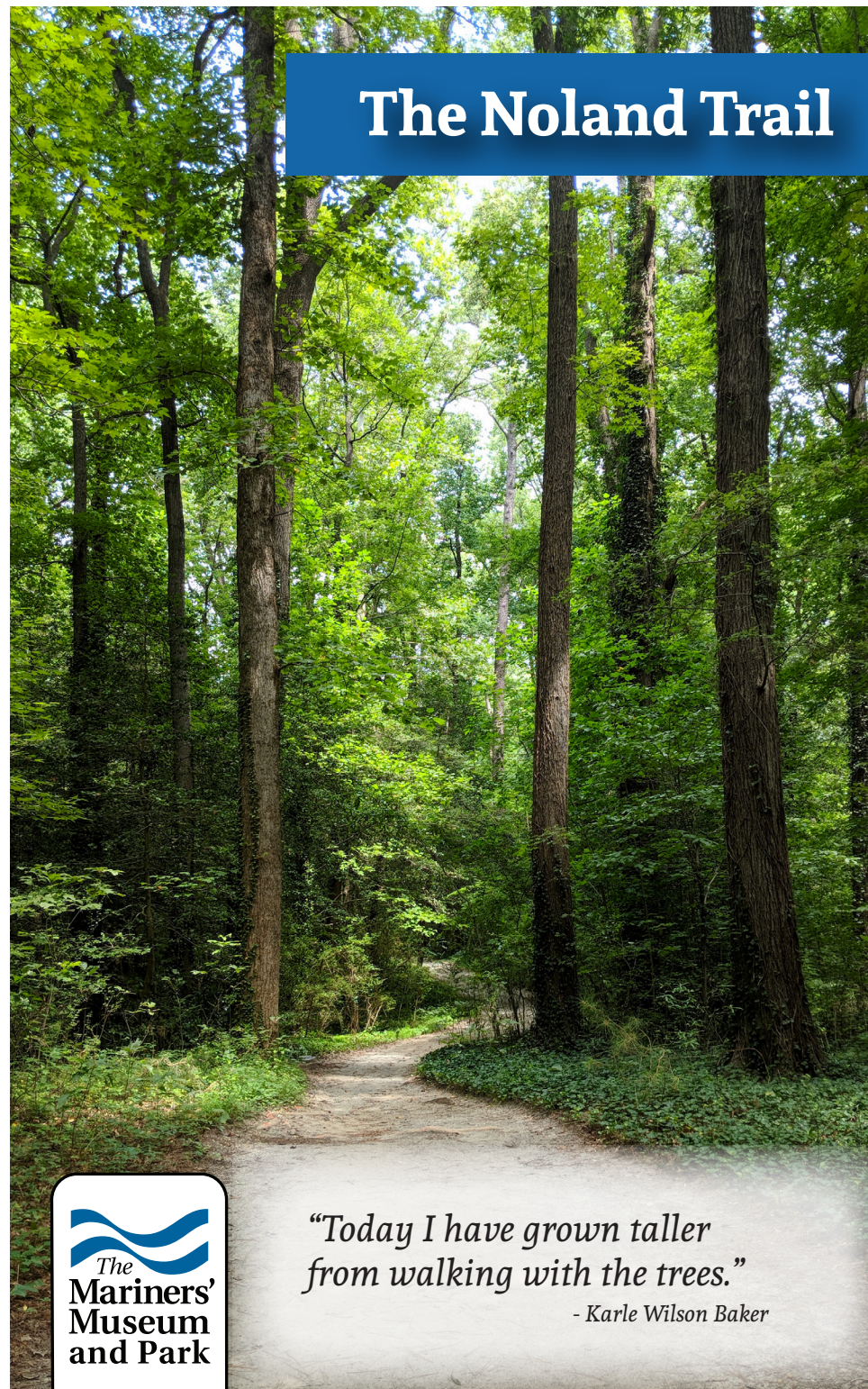


Scan QR Code or donate online at
MarinersMuseum.org



@MarinersMuseum
#iamaMariner • #NolandTrail

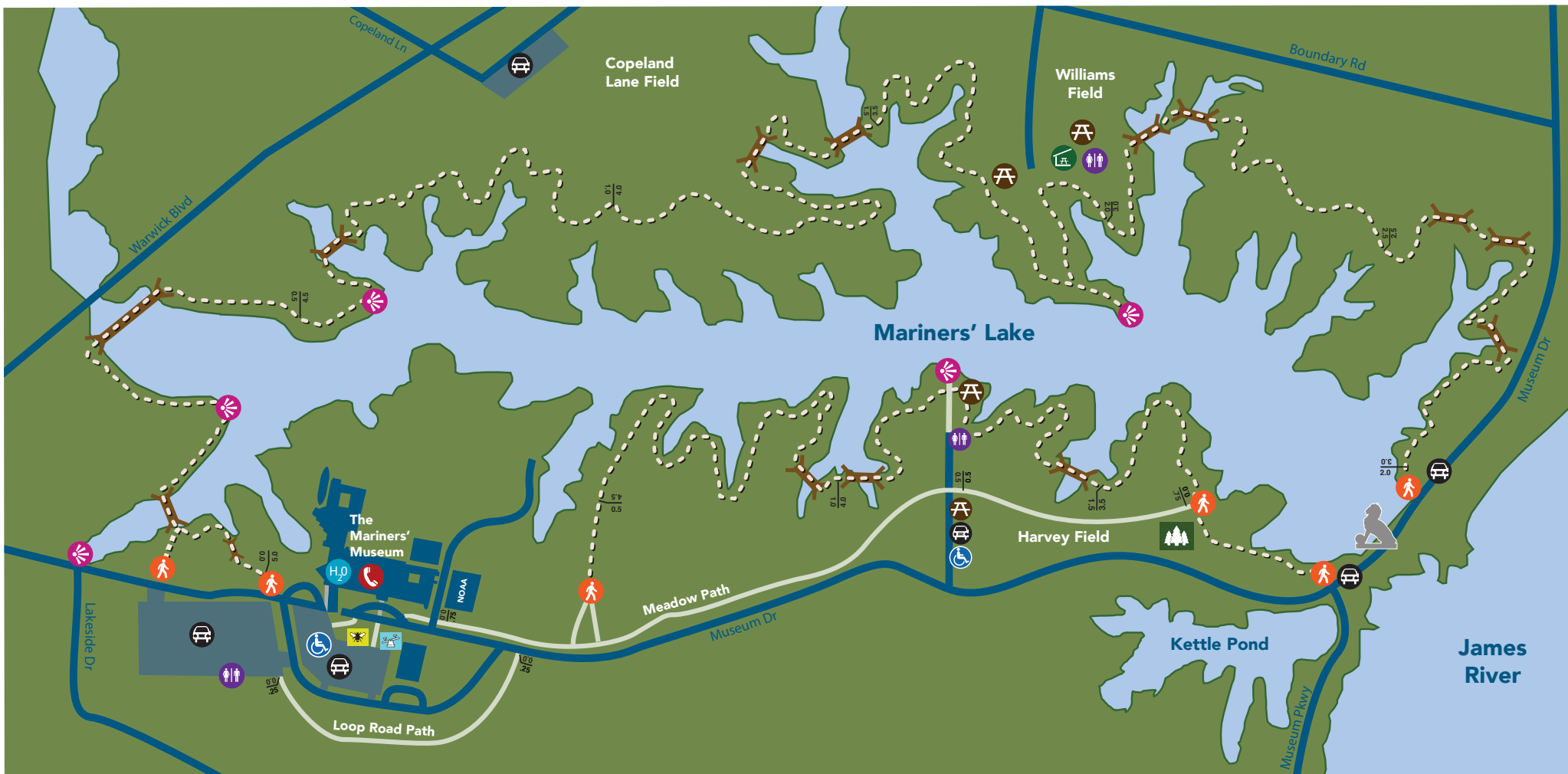
The Noland Trail



**The
Mariners'
Museum
and Park**

*"Today I have grown taller
from walking with the trees."*

- Karle Wilson Baker



PRINTED FALL 2022

----- Noland Trail

— Path

Wooden Footbridge

Bumblebee Garden

Lil' Mariners' Play Zone

Longleaf Pine Grove

Trail Entrance

Lions Bridge

Overlook

Parking

Handicap Parking

Porta John

Phone

Water, Drinks & Snacks
Available in the Museum

Picnic Area

Shelter with Picnic Area

Lake & Park Rules

- Bicycles and motorcycles are not allowed on the trail and paths.
- All visitors must vacate the Museum Park property by sunset.
- Swimming, fishing, boating, and loitering are not permitted.
- Alcoholic beverages, littering, and open fires are prohibited.
- Pets must remain on a leash.
- No weapons permitted.

Park Hours:

October 1 - March 31 • 6 a.m. - 6 p.m.
April 1 - September 30 • 6 a.m. - 7 p.m.

Closed Thanksgiving & Christmas Day.

Security

In the event of an incident, please call Mariners' Security:

- Emergency: (757) 591-7777
- Lost & Found/Non-emergency: (757) 591-7796 or visit our security office located at the Business Entrance of the Museum.